



Hon. Shri. Babanrao Pachpute Vichardhara Trust's Group of Institutions

## Faculty of Pharmacy

A/P-Kashti, Tal-Shrigonda, Dist-Ahmednagar, Pin- 414701

Approved by PCI, New Delhi, Affiliated to Savitribai Phule Pune University, Pune & MSBTE, Mumbai.

Website – www.parikrama.edu.in, Phone – 9766126772, Email – pariphr@gmail.com

Vision – 'To serve with high quality education for development of students as competent pharmacy professionals for the upliftment of socio-economic status in rural areas'

# Feedback Analysis Report of Stakeholders AY 2021-22

## INDEX

Sr no	Perticulars	Page number
1	Student Feedback Analysis 2021-22	2 - 10
2	Faculty Feedback Analysis 2021-22	11 - 14
3	Alumni Feedback Analysis 2021-22	15 - 18
4	Employer Feedback Analysis 2021-22	19 - 22



PRINCIPAL  
H.S.B.P.V.T.'S GROUP OF INSTITUTION'S  
Faculty of Pharmacy  
Kashti, Tal-Shrigonda, Dist-A. Nagar

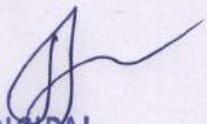
DTE Code: 5303  
PCI code: 851

PUN Code: CPHA017210  
AISHE Code: C-41322

AICTE ID: 1-12614931  
MSBTE Code - 2022

# **B Pharmacy Student Feedback Analysis Report 2021-22**



  
PRINCIPAL  
H.S.B.P.V.T.'S GROUP OF INSTITUTION'S  
Faculty of Pharmacy  
Kashti, Tal-Shrigonda, Dist-A.Nagar



Heading	Description	Total
Class	Sem II	-
Faculty Name	Biochem	-
Subject Name	Ms.Giramkar	-
Date	04/01/2022	-
Total Candidates	114	-
Total Feedbacks	78	-
Given Feedback(%)	68.42	/100
No Problem	55	/78
No Problem(%)	70.51	/100
Communication skill?	13	/78
Interest generated in topic by staff?	15	/78
Staff is courteous & impartial in dealing with students?	14	/78
Punctuality of staff?	15	/78
Staff asks questions to promote interaction?	16	/78
Knowledge of staff?	17	/78
Sincerity & commitment of staff?	13	/78
Timely completion of syllabus?	16	/78
Use of teaching aid?	16	/78
Overall rating of staff?	14	/78
Feedback	Very Good (A) (81%)	/100



  
**PRINCIPAL**  
 H.S.B.P.V.T.'S GROUP OF INSTITUTION'S  
 Faculty of Pharmacy  
 Kashti

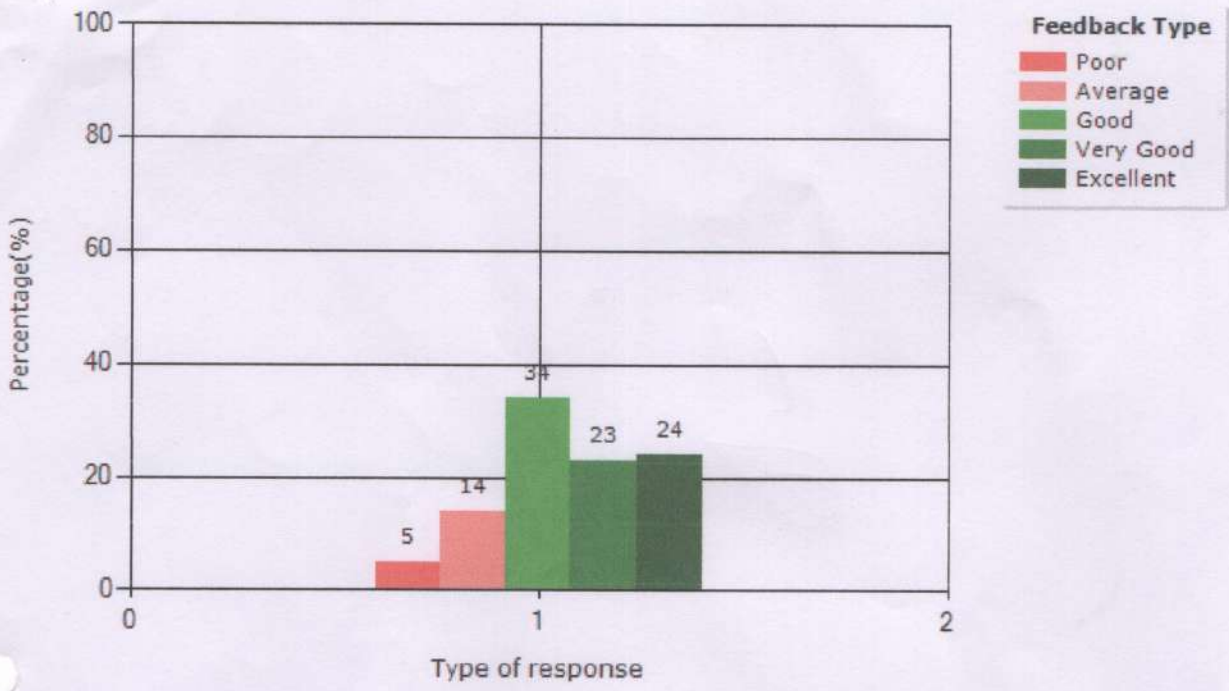
Sem II_Biochem_Ms.Giramkar	Question	Poor	Average	Good	Very Good	Excellent
1	Communication skill?	2.56	14.1	34.62	24.36	24.36
2	Interest generated in topic by staff?	3.85	15.38	30.77	28.21	21.79
3	Staff is courteous & impartial in dealing with students?	5.13	12.82	33.33	25.64	23.08
4	Punctuality of staff?	5.13	14.1	29.49	30.77	20.51
5	Staff asks questions to promote interaction?	5.13	15.38	32.05	24.36	23.08
6	Knowledge of staff?	5.13	16.67	34.62	16.67	26.92
7	Sincerity & commitment of staff?	6.41	10.26	33.33	21.79	28.21
8	Timely completion of syllabus?	6.41	14.1	33.33	24.36	21.79
9	Use of teaching aid?	5.13	15.38	38.46	15.38	25.64
10	Overall rating of staff?	7.69	10.26	37.18	20.51	24.36



*[Handwritten Signature]*

**PRINCIPAL**

H.S.B.P.V.T.'S GROUP OF INSTITUTION'S  
Faculty of Pharmacy  
Kashti, Tal-Shrigonda, Dist-A. Nagar




  
PRINCIPAL  
H.S.B.P.V.T.'S GROUP OF INSTITUTION'S  
Faculty of Pharmacy  
Kashti, Tal-Shriwonda, Dist. Solapur



# **M Pharmacy Student Feedback Analysis Report 2021-22**



  
PRINCIPAL  
H.S.B.P.V.T.'S GROUP OF INSTITUTION'S  
Faculty of Pharmacy  
Kashti, Tal-Shrigonda, Dist-A.Nagar



## Feedback Report

[Back](#)Feedback ID Subtopic 

Heading	Description	Total
Class	SY M PH 21-22	-
Faculty Name	Research	-
Subject Name	Prof. Pawar	-
Date	01/06/2022	-
Total Candidates	16	-
Total Feedbacks	10	-
Given Feedback(%)	62.5	/100
No Problem	7	/10
No Problem(%)	70	/100
Communication skill?	0	/10
Interest generated by staff?	0	/10
Staff is courteous and impartial in dealing with students?	2	/10
Punctuality of staff?	0	/10
Staff asks questions to promote interactions	1	/10
Knowledge base of staff?	1	/10
Timely completion of syllabus?	1	/10
Overall rating of the staff?	1	/10
Feedback	Excellent (A+) (93%)	/100

All rights reserved. Copyrights Twinkle IT Solutions Pvt Ltd. ©2016.



  
PRINCIPAL

H.S.B.P.V.T.'S GROUP OF INSTITUTION'S  
Faculty of Pharmacy  
Kashti, Tal-Shrigonda, Dist-A.Nagar





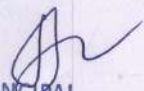
## Feedback Analysis

[Back](#)Feedback ID Subtopic [Show Feedback](#)[Graphical Analysis](#)[Suggestions](#)[Export](#)

SY M PH 21-22_ Research _ Prof. Pawar	Question	Poor	Average	Good	Very Good	Excellent
1	Communication skill?	0	0	20	40	40
2	Interest generated by staff?	0	0	20	30	50
3	Staff is courteous and impartial in dealing with students?	0	20	10	40	30
4	Punctuality of staff?	0	0	20	40	40
5	Staff asks questions to promote interactions	10	0	30	20	40
6	Knowledge base of staff?	0	10	30	10	50
7	Timely completion of syllabus?	0	10	30	20	40
8	Overall rating of the staff?	10	0	30	20	40

All rights reserved. Copyrights Twinkle IT Solutions Pvt Ltd. ©2016.



  
**PRINCIPAL**  
 H.S.B.P.V.T.'S GROUP OF INSTITUTION'S  
 Faculty of Pharmacy  
 Kashti, Tal-Shrigonda, Dist-A.Nagar





## Feedback Analysis

[Back](#)

Feedback ID

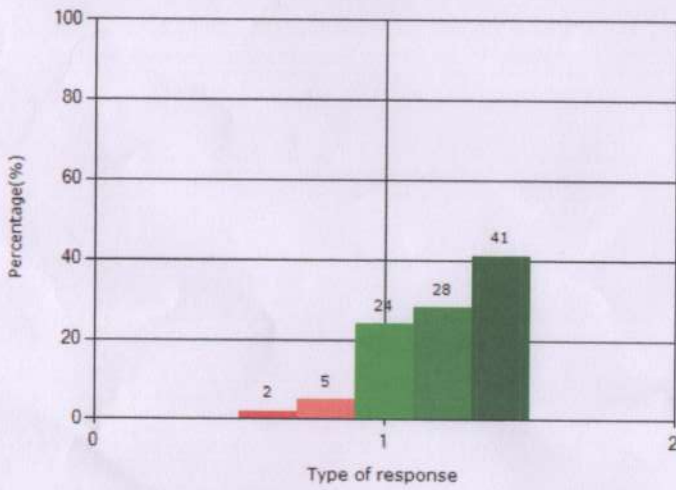
Subtopic

Show Feedback

Graphical Analysis

Suggestions

Graphical analysis of [ SY M PH 21-22\_Research \_ Prof. Pawar ] [ 01/06/2022 ]




**Feedback Type**  
Poor  
Average  
Good  
Very Good  
Excellent



Export to PDF

All rights reserved. Copyrights Twinkle IT Solutions Pvt Ltd. ©2019



  
PRINCIPAL  
H.S.B.P.V.T.'S GROUP OF INSTITUTION'S  
Faculty of Pharmacy  
Kashti, Tal-Shrigonda, Dist-A.Nagar



## Feedback Analysis

[Back](#)

Feedback ID

Subtopic

[Show Feedback](#)

[Graphical Analysis](#)


[Suggestions](#)

[Export](#)

**Suggestions\_SY M PH 21-22\_Research \_ Prof. Pawar**

Need more research related syllabus

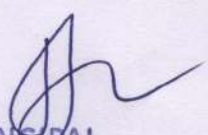


  
PRINCIPAL  
H.S.B.P.V.T.'S GROUP OF INSTITUTION'S  
Faculty of Pharmacy  
Kashti, Tal-Shrigonda, Dist-A.Nagar



# Faculty Feedback Analysis Report 2021- 22



  
PRINCIPAL  
H.S.B.P.V.T.'S GROUP OF INSTITUTION'S  
Faculty of Pharmacy  
Kashti, Tal-Shrigonda, Dist-A.Nagar



## Feedback Analysis

[Back](#)Feedback ID Faculty 2021-22 

Faculty 2021-22	Question	Poor	Average	Good	Very Good	Excellent
1	The learning objectives are link effectively in the syllabus.	0	0	14.81	48.15	37.04
2	The course outcomes are clear and appropriate to the needs of the students.	0	3.7	14.81	33.33	48.15
3	The timely coverage of syllabus as possible as the mentioned number of hours.	0	7.41	18.52	25.93	48.15
4	The practical's relates to the theory content	0	3.7	18.52	44.44	33.33
5	The propose textbooks are sufficient and map onto the syllabus	0	0	25.93	22.22	51.85
6	The provided assessments methods precisely measure student learning.	0	0	14.81	48.15	37.04
7	It would be easy for a new Teacher to teach this course.	0	0	11.11	48.15	40.74
8	Your opinion about library holdings for the course.	3.7	7.41	25.93	29.63	33.33
9	Is institute infrastructure is appropriate for academic excellence?	0	0	18.52	25.93	55.56
10	If any suggestions	0	7.41	18.52	40.74	33.33

All rights reserved. Copyrights Twinkle IT Solutions Pvt Ltd. © 2016



PRINCIPAL

H.S.B.P.V.T.'S GROUP OF INSTITUTION'S  
Faculty of Pharmacy  
Kashti, Tal-Shrigonda, Dist-A.Nagar





# Feedback Analysis

[Back](#)

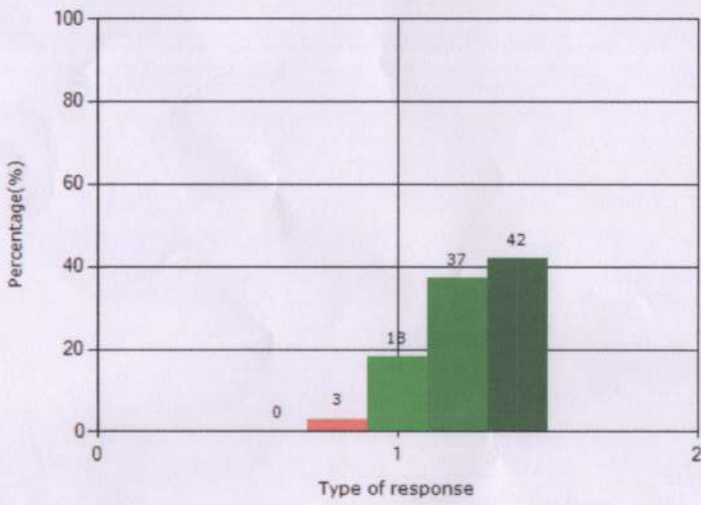
Feedback ID Faculty 2021-22

Show Feedback

Graphical Analysis

Suggestions

Graphical analysis of [ Faculty 2021-22\_ ] [ 06/07/2022 ]



**Feedback Type**  
Poor  
Average  
Good  
Very Good  
Excellent

Poor 0 %

Average 3 %

Good 18 %

Very Good 37 %

Excellent 42 %

[Export to PDF](#)

All rights reserved. Copyrights Twinkle IT Solutions Pvt. Ltd. © 2016



PRINCIPAL

H.S.B.P.V.T.'S GROUP OF INSTITUTION'S  
Faculty of Pharmacy  
Kashti, Tal-Shrigonda, Dist-A.Nagar



## Feedback Analysis

[Back](#)

Feedback ID

Show Feedback

Graphical Analysis

Suggestions

Export

### Suggestions Faculty 2021-22

Teachers less time to conduct academic.

Lack availability of some reference book.

Placement is most important part of any colleges, please focus on it ??

1.The time given in syllabus is not matching with actual time duration given by university. 2. Needs to input more industry oriented content in curriculum.

Need to give more teaching time in University academic calendar to cover complete syllabus.

As considering PCI curriculum there is need to increase text books. The Pharmacognosy course should be introduce in FY rather SY. SY and TY pharmacognosy need proper bifurgation for better understanding of core subject which ultimately increase better research projects in herbals. PCI can give industrial touch to Pharmacognosy subject by introduction of Natural/Herbal Drug Technology like subjects in Final Year.

Very nice infrastructure

Need more time for academics


Need content beyond syllabus lectures as well as smart board

No suggestion

No suggestions

All rights reserved. Copyrights Twinkle IT Solutions Pvt Ltd © 2016



  
PRINCIPAL  
H.S.B.P.V.T.'S GROUP OF INSTITUTION'S  
Faculty of Pharmacy  
Kashti, Tal-Shrigonda, Dist-A.Nagar



# **Alumni Feedback Analysis Report 2021- 22**



A handwritten signature in blue ink, consisting of a large, stylized initial 'S' followed by a long horizontal stroke.

PRINCIPAL  
H.S.B.P.V.T'S GROUP OF INSTITUTION'S  
Faculty of Pharmacy  
Kashti, Tal-Shrigonda, Dist-A.Nagar




## Feedback Analysis

[Back](#)Feedback ID [Show Feedback](#)[Graphical Analysis](#)[Suggestions](#)[Export](#)

Alumni 21-22	Question	Poor	Average	Good	Very Good	Excellent
1	How do you rate the courses that you have learn in relation to your current job.	3.57	3.57	25	50	17.86
2	How do you rate the subject knowledge and technical skills imparted by the curriculum?	3.57	3.57	21.43	50	21.43
3	How do you rate the courses that you have learn Suiting the requirements of the Industry?	0	17.86	14.29	50	17.86
4	How do you rate the overall development activities organized by the college for your development?	3.57	10.71	25	42.86	17.86
5	How do you rate the learning experience in terms of their related to the real life application?	0	10.71	21.43	42.86	25
6	Any suggestions on improving the curriculum	0	10.71	21.43	39.29	28.57

All rights reserved. Copyrights Twinkle IT Solutions Pvt Ltd. © 2016.



  
PRINCIPAL  
H.S.B.P.V.T.'S GROUP OF INSTITUTION'S  
Faculty of Pharmacy  
Kashti, Tal-Shrigonda, Dist-A.Nagar





## Feedback Analysis

[Back](#)

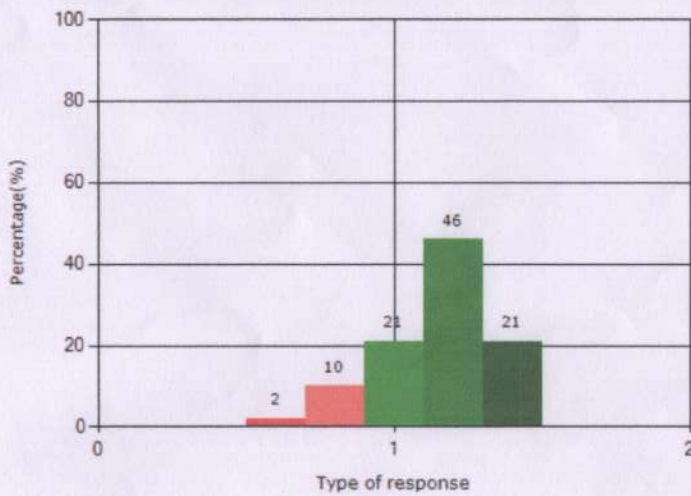
Feedback ID

Show Feedback

Graphical Analysis

Suggestions

Graphical analysis of [ Alumni 21-22\_ ] [ 08/15/2022 ]



### Feedback Type

- Poor
- Average
- Good
- Very Good
- Excellent

Poor 2 %

Average 10 %

Good 21 %


Very Good 46 %

Excellent 21 %

[Export to PDF](#)

All rights reserved. Copyrights Twinkle IT Solutions Pvt Ltd. © 2016



  
PRINCIPAL  
H.S.B.P.V.T.'S GROUP OF INSTITUTION'S  
Faculty of Pharmacy  
Kashti, Tal-Shrigonda, Dist-A.Nagar



## Feedback Analysis

[Back](#)

Feedback ID

Show Feedback

Graphical Analysis

Suggestions

Export

### Suggestions Alumni 21-22

Do more company and industry placements.


Nice and good initiative about research program and extracurricular activity

Nice faculty and their knowledge

Everything is very good


All rights reserved. Copyrights Twinkle IT Solutions Pvt Ltd. ©2016.



  
PRINCIPAL  
H.S.B.P.V.T.'S GROUP OF INSTITUTION'S  
Faculty of Pharmacy  
Kashti, Tal-Shrigonda, Dist-A.Nagar

# **Employer Feedback Analysis Report 2021- 22**



  
PRINCIPAL  
H.S.B.P.V.T.'S GROUP OF INSTITUTION'S  
Faculty of Pharmacy  
Kashti, Tal-Shrigonda, Dist-A.Nagar






## Feedback Analysis

[Back](#)Feedback ID [Show Feedback](#)[Graphical Analysis](#)[Suggestions](#)[Export](#)

Employers 21-22	Question	Poor	Average	Good	Very Good	Excellent
1	How do you rate for Technical/subject knowledge and skills in students?	0	0	33.33	66.67	0
2	How do you rate Using technology and equipment at workplace?	0	0	16.67	83.33	0
3	Open to new ideas and learning new technologies	0	0	33.33	50	16.67
4	how do you rate for students Thinks analytically and critically while solving Problems and making decisions	0	0	16.67	66.67	16.67
5	Ethical attitude with regard to job responsibilities	0	0	0	50	50
6	How do you rate for academics planning and organization skills?	0	0	0	83.33	16.67
7	Involvement in social activities	0	0	0	100	0
8	If any suggestions.	0	0	16.67	50	33.33



  
**PRINCIPAL**  
 H.S.B.P.V.T.'S GROUP OF INSTITUTION'S  
 Faculty of Pharmacy  
 Kashti, Tal-Shrigonda, Dist-A.Nagar



# Feedback Analysis

[Back](#)

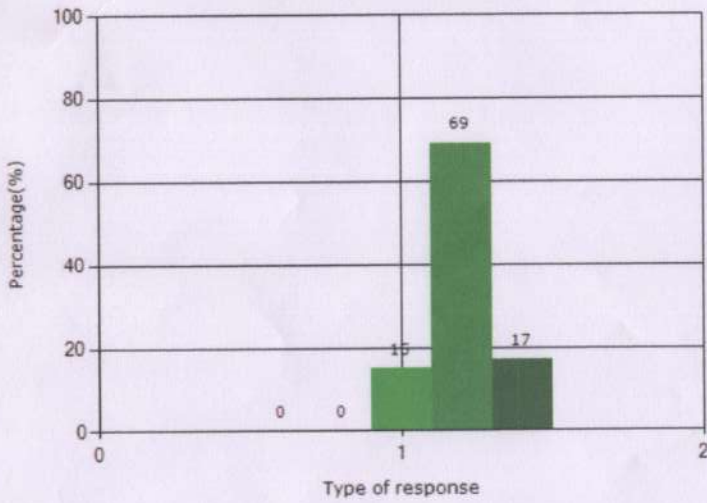
Feedback ID: Employers 21-22

Show Feedback

Graphical Analysis

Suggestions

Graphical analysis of [ Employers 21-22\_ ] [ 02/22/2021 ]



### Feedback Type

- Poor
- Average
- Good
- Very Good
- Excellent

Poor 0 %

Average 0 %

Good 15 %

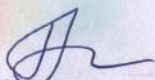
Very Good 69 %

Excellent 17 %

Export to PDF

All rights reserved. Copyrights Twinkle IT Solutions Pvt Ltd. ©2016.



  
PRINCIPAL  
H.S.B.P.V.T.'S GROUP OF INSTITUTION'S  
Faculty of Pharmacy  
Kashti, Tal-Shrigonda, Dist-A.Nagar



## Feedback Analysis

[Back](#)

Feedback ID

Employers 21-22

Show Feedback

Graphical Analysis

Suggestions

Export

### Suggestions\_Employers 21-22

Need a more staff from your institute

All rights reserved. Copyrights Twinkle IT Solutions Pvt Ltd. ©2016



  
PRINCIPAL

H.S.B.P.V.T'S GROUP OF INSTITUTION'S  
Faculty of Pharmacy  
Kashti, Tal-Shrigonda, Dist-A.Nagar