



Hon. Shri. Babanrao Pachpute Vichardhara Trust's Group of Institutions

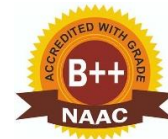
Faculty of Pharmacy

A/P-Kashti, Tal-Shrigonda, Dist-Ahmednagar, Pin- 414701

Approved by PCI, New Delhi, Affiliated to Savitribai Phule Pune University, Pune & MSBTE, Mumbai.

Website – www.parikrama.edu.in, Phone – 9766126772, Email – pariphr@gmail.com

Vision – 'To serve with high quality education for development of students as competent pharmacy professionals for the upliftment of socio-economic status in rural areas'



Best Practice 01: Sustainable and Green Pharmacy Campus

Introduction

At HSBPVT's GOI Faculty of Pharmacy, sustainability and environmental responsibility are integral to institutional goals. Recognizing the need for eco-conscious practices in education and community engagement, the institution has created a campus environment that serves as both a model of green living and a center for learning. The sustainable campus initiative is aimed at integrating environmental stewardship into everyday practices, fostering a culture of conservation among students and staff.

Objectives

- To create a green, clean, and sustainable campus environment.
- To reduce the ecological footprint by adopting renewable energy and water conservation practices.
- To raise awareness of environmental issues and promote sustainable habits among students and staff.
- To actively contribute to the global effort to combat climate change and reduce pollution.

The Practice

- 1. Adoption of Renewable Energy:**
 - The institution has installed solar panels that contribute to the energy needs of the campus, reducing dependency on conventional electricity.
 - LED lighting systems have replaced traditional bulbs across campus buildings, cutting energy consumption significantly.
- 2. Water Conservation Measures:**
 - Rainwater harvesting systems have been implemented to capture and store rainwater for various uses.
 - Drip irrigation systems are used to efficiently water the campus lawns and botanical garden, minimizing water wastage.
- 3. Green Infrastructure and Plantations:**
 - A botanical garden with medicinal plants serves as both a resource for education and a step toward preserving biodiversity.
 - Tree plantation drives are regularly conducted, leading to a lush, green campus that contributes to local biodiversity and improves air quality.
- 4. Waste Management:**
 - Waste segregation bins are placed across the campus, promoting recycling and reducing landfill waste.



Hon. Shri. Babanrao Pachpute Vichardhara Trust's Group of Institutions

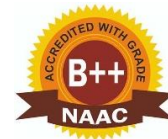
Faculty of Pharmacy

A/P-Kashti, Tal-Shrigonda, Dist-Ahmednagar, Pin- 414701

Approved by PCI, New Delhi, Affiliated to Savitribai Phule Pune University, Pune & MSBTE, Mumbai.

Website – www.parikrama.edu.in, Phone – 9766126772, Email – pariphr@gmail.com

Vision – 'To serve with high quality education for development of students as competent pharmacy professionals for the upliftment of socio-economic status in rural areas'



-
- Single-use plastics are banned, encouraging sustainable alternatives among staff and students.

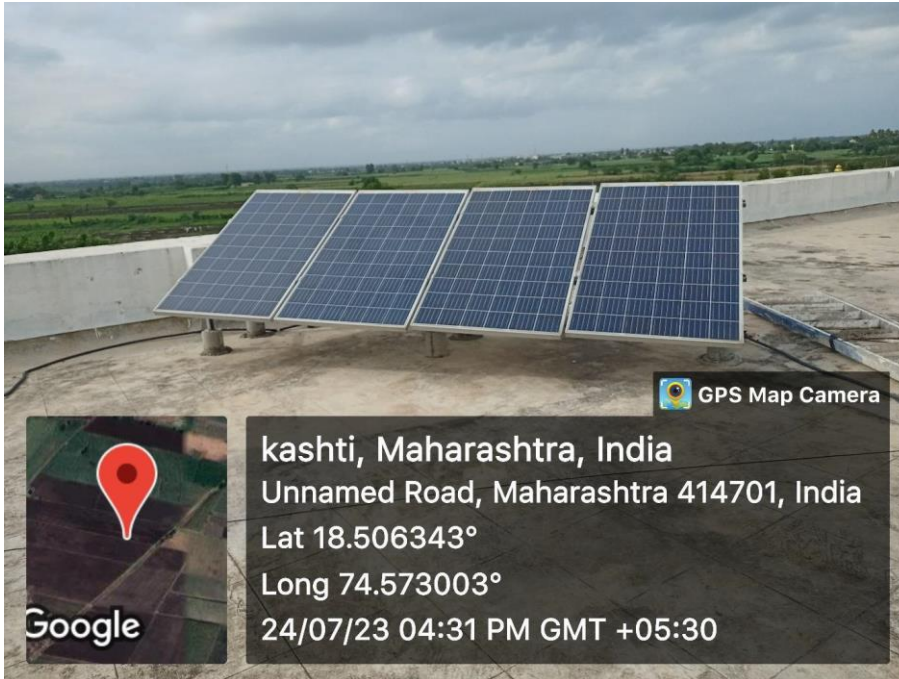
Outcomes of the Practice

- **Enhanced Energy Efficiency:**
The installation of solar panels and LED lights has resulted in a 30% reduction in electricity bills.
- **Improved Water Resource Management:**
Rainwater harvesting has reduced the reliance on external water sources during the summer months.
- **Increased Green Cover:**
Over 1,000 trees have been planted in the past five years, transforming the campus into a biodiversity hotspot.
- **Student Engagement:**
Awareness programs have instilled a sense of responsibility among students, with many participating in eco-friendly initiatives both on and off-campus.
- **Recognition:**
The campus has been acknowledged as a model of environmental sustainability in the region, attracting prospective students and collaborators.

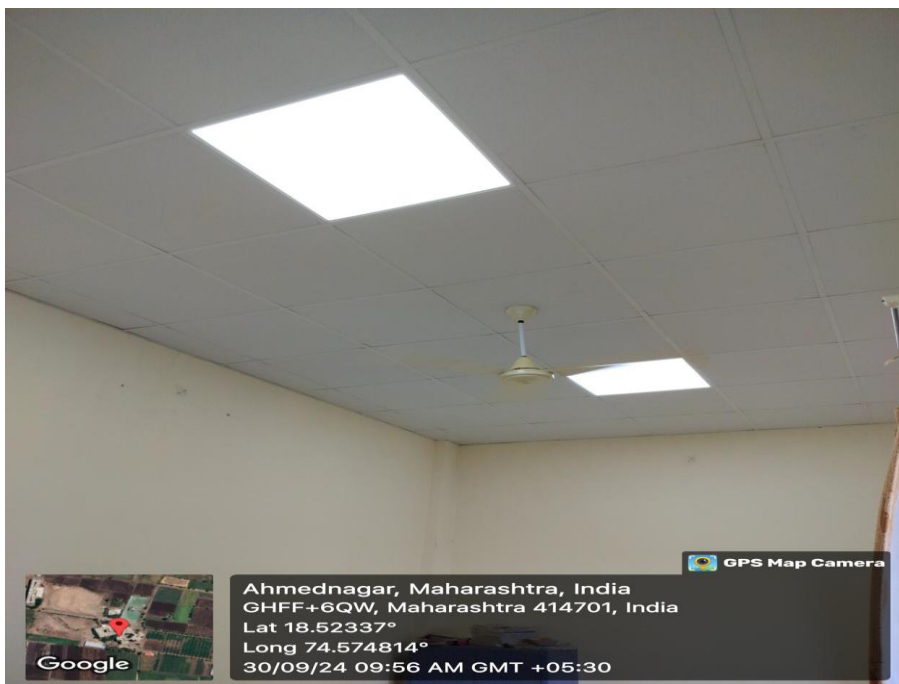
Challenges and Resources Required

- **Challenges:**
 - Maintaining the systems during water-scarce seasons.
 - Ensuring active participation from all stakeholders in green initiatives.

Evidences for Best Practice – 1.



Solar Panel for electricity back up





Hon. Shri. Babanrao Pachpute Vichardhara Trust's Group of Institutions
Faculty of Pharmacy

A/P-Kashti, Tal-Shrigonda, Dist-Ahmednagar, Pin- 414701
Approved by PCI, New Delhi, Affiliated to Savitribai Phule Pune University, Pune & MSBTE, Mumbai.
Website – www.parikrama.edu.in, Phone – 9766126772, Email – pariphr@gmail.com



Vision – 'To serve with high quality education for development of students as competent pharmacy professionals for the upliftment of socio-economic status in rural areas'



Sensor based switch for auto on / off lights

Management of the various types of degradable and non-degradable waste

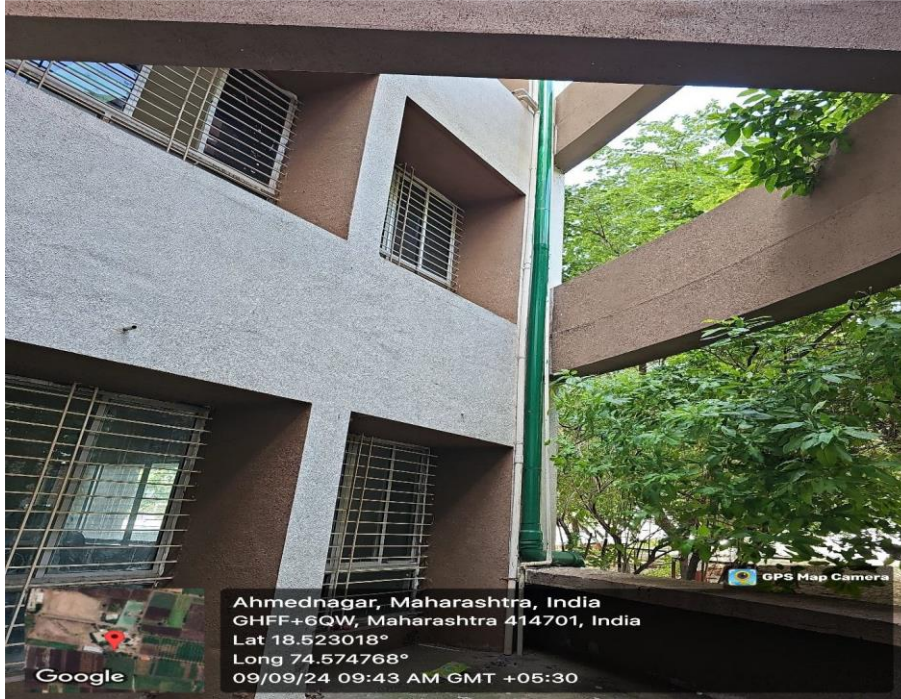


Dumping of waste in chamber away from campus



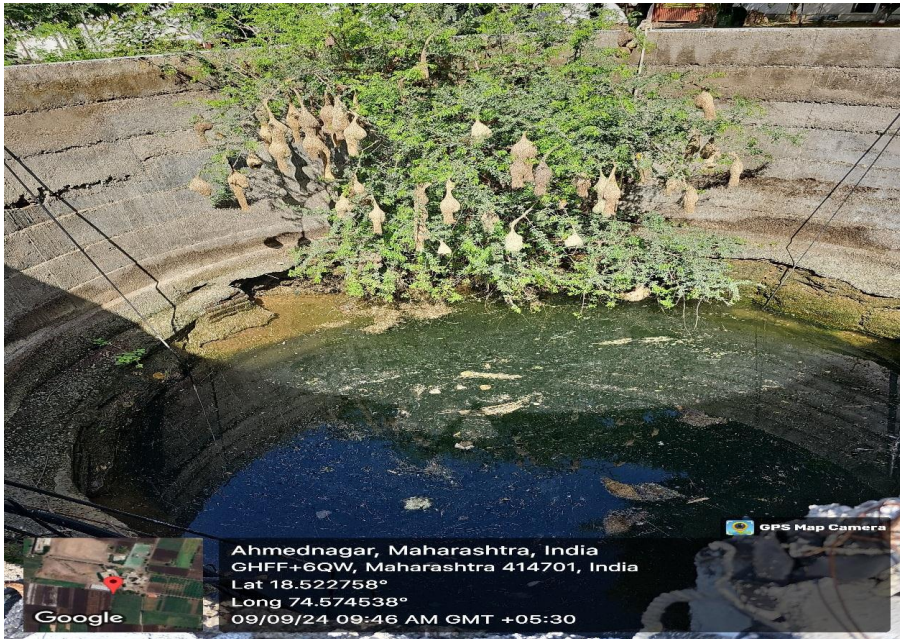
Non degradable waste collection

Water conservation



(Green pipe for Rain water harvesting)





Rain water harvesting



Water purification



Hon. Shri. Babanrao Pachpute Vichardhara Trust's Group of Institutions
Faculty of Pharmacy

A/P-Kashti, Tal-Shrigonda, Dist-Ahmednagar, Pin- 414701
Approved by PCI, New Delhi, Affiliated to Savitribai Phule Pune University, Pune & MSBTE, Mumbai.
Website – www.parikrama.edu.in, Phone – 9766126772, Email – pariphr@gmail.com



Vision – 'To serve with high quality education for development of students as competent pharmacy professionals for the upliftment of socio-economic status in rural areas'

Green Campus



Kashti, Maharashtra, India
GHFM+F29, Kashti, Maharashtra 414701, India
Lat 18.524002°
Long 74.582026°
04/09/24 08:37 AM GMT +05:30



Kashti, Maharashtra, India
GHFP+WGV, Kashti, Maharashtra 414701, India
Lat 18.52686°
Long 74.58166°
04/09/24 08:51 AM GMT +05:30



Hon. Shri. Babanrao Pachpute Vichardhara Trust's Group of Institutions
Faculty of Pharmacy

A/P-Kashti, Tal-Shrigonda, Dist-Ahmednagar, Pin- 414701
Approved by PCI, New Delhi, Affiliated to Savitribai Phule Pune University, Pune & MSBTE, Mumbai.
Website – www.parikrama.edu.in, Phone – 9766126772, Email – pariphr@gmail.com



Vision – 'To serve with high quality education for development of students as competent pharmacy professionals for the upliftment of socio-economic status in rural areas'





Hon. Shri. Babanrao Pachpute Vichardhara Trust's Group of Institutions
Faculty of Pharmacy

A/P-Kashti, Tal-Shrigonda, Dist-Ahmednagar, Pin- 414701
Approved by PCI, New Delhi, Affiliated to Savitribai Phule Pune University, Pune & MSBTE, Mumbai.
Website – www.parikrama.edu.in, Phone – 9766126772, Email – pariphr@gmail.com



Vision – 'To serve with high quality education for development of students as competent pharmacy professionals for the upliftment of socio-economic status in rural areas'





Hon. Shri. Babanrao Pachpute Vichardhara Trust's Group of Institutions
Faculty of Pharmacy

A/P-Kashti, Tal-Shrigonda, Dist-Ahmednagar, Pin- 414701
Approved by PCI, New Delhi, Affiliated to Savitribai Phule Pune University, Pune & MSBTE, Mumbai.
Website – www.parikrama.edu.in, Phone – 9766126772, Email – pariphr@gmail.com

Vision – 'To serve with high quality education for development of students as competent pharmacy professionals for the upliftment of socio-economic status in rural areas'



Pedestrian-friendly pathways





Hon. Shri. Babanrao Pachpute Vichardhara Trust's Group of Institutions

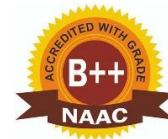
Faculty of Pharmacy

A/P-Kashti, Tal-Shrigonda, Dist-Ahmednagar, Pin- 414701

Approved by PCI, New Delhi, Affiliated to Savitribai Phule Pune University, Pune & MSBTE, Mumbai.

Website – www.parikrama.edu.in, Phone – 9766126772, Email – pariphr@gmail.com

Vision – 'To serve with high quality education for development of students as competent pharmacy professionals for the upliftment of socio-economic status in rural areas'



Best Practice 02: PARAS – Pathways for Assisting Rural and Abandoned Societies

Introduction

The PARAS initiative reflects HSBPVT's GOI Faculty of Pharmacy's commitment to addressing socio-economic disparities in rural and abandoned societies. By bridging the gaps in education, healthcare, and community development, the initiative seeks to empower marginalized populations. It also provides students with practical opportunities to engage with societal challenges, enhancing their learning and social consciousness.

Objectives

- To provide essential healthcare services and educational support to rural and abandoned communities.
- To create pathways for students in underserved areas to achieve personal and professional growth.
- To foster empathy and social responsibility among pharmacy students.
- To strengthen the institution's role in contributing to societal upliftment and inclusive development.

The Practice

- 1. Healthcare Support:**
 - Regular health camps are conducted to address community health issues, including screenings for diabetes, hypertension, and nutritional deficiencies.
 - Hygiene awareness sessions educate residents on sanitation, personal care, and disease prevention.
- 2. Educational Empowerment:**
 - Faculty members visit Ashramshalas and organizations like Snehalaya to mentor students, helping them improve communication skills and prepare for future careers.
 - Career guidance workshops provide insights into higher education and job opportunities.
- 3. Community Collaboration:**
 - The institution conducts tree plantation drives and cleanliness campaigns in collaboration with local communities.
 - Cultural events and festive celebrations foster goodwill and strengthen bonds with the community.
- 4. Skill Development and Digital Literacy:**
 - Vocational training programs equip young individuals with employable skills.



Hon. Shri. Babanrao Pachpute Vichardhara Trust's Group of Institutions

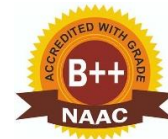
Faculty of Pharmacy

A/P-Kashti, Tal-Shrigonda, Dist-Ahmednagar, Pin- 414701

Approved by PCI, New Delhi, Affiliated to Savitribai Phule Pune University, Pune & MSBTE, Mumbai.

Website – www.parikrama.edu.in, Phone – 9766126772, Email – pariphr@gmail.com

Vision – 'To serve with high quality education for development of students as competent pharmacy professionals for the upliftment of socio-economic status in rural areas'



-
- Digital literacy sessions introduce basic computer operations and internet use, enhancing career readiness.

Outcomes of the Practice

- **Health Improvements:**
 - Over 500 individuals have benefited from health check-ups and hygiene awareness programs.
 - Reduction in common health issues due to preventive education and access to basic medicines.
- **Empowerment Through Education:**
 - Several students mentored through PARAS have successfully enrolled in higher education programs, including one who joined the MBA program at the institution.
 - Improved self-confidence and communication skills among young participants.
- **Community Impact:**
 - Enhanced living conditions in target communities through better hygiene and health awareness.
 - Strengthened partnerships between the institution and local organizations.
- **Student Growth:**
 - Pharmacy students gain valuable hands-on experience and develop a deeper understanding of societal needs.

Challenges and Resources Required

- **Challenges:**
 - Resistance to change from community members rooted in traditional beliefs.
 - Limited funding for sustaining and expanding the initiative's scope.

Evidences for Best Practice- 2:





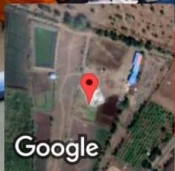
GPS Map Camera



Ahmednagar, Maharashtra, India
Unnamed Road, Maharashtra 413728, India
Lat 18.674362°
Long 74.737981°
08/11/23 12:32 PM GMT +05:30



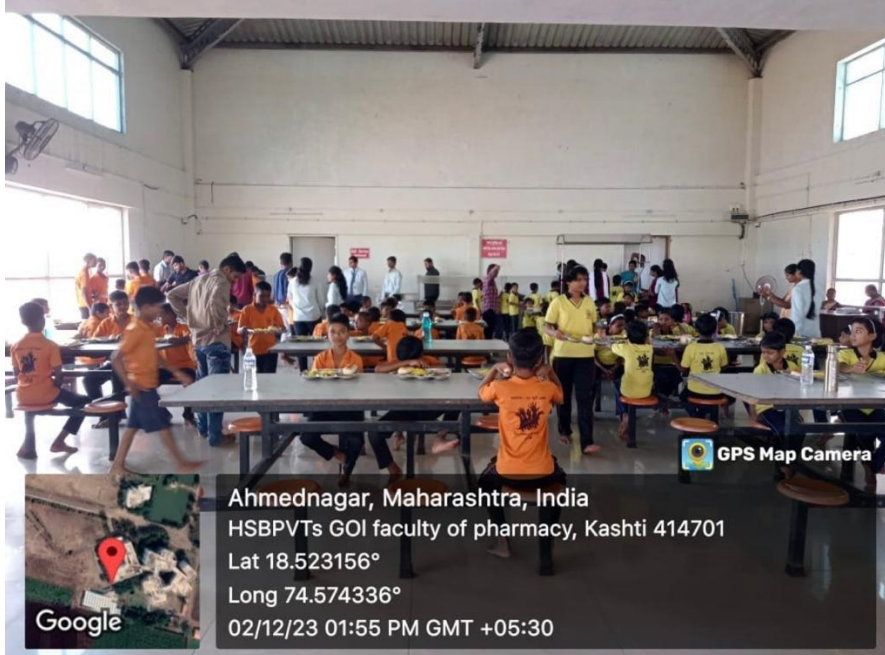
GPS Map Camera



Ahmednagar, Maharashtra, India
Unnamed Road, Maharashtra 413728, India
Lat 18.674396°
Long 74.73798°
08/11/23 12:16 PM GMT +05:30

Sweets Distribution to Snehalaya Children

Sweets Distribution to Snehalaya Children



Arrange Campus Visit of Pharmacy College for Snehalaya Children



Mou Signing with Snehalaya and give them Memento.





Hon. Shri. Babanrao Pachpute Vichardhara Trust's Group of Institutions
Faculty of Pharmacy

A/P-Kashti, Tal-Shrigonda, Dist-Ahmednagar, Pin- 414701
Approved by PCI, New Delhi, Affiliated to Savitribai Phule Pune University, Pune & MSBTE, Mumbai.
Website – www.parikrama.edu.in, Phone – 9766126772, Email – pariphr@gmail.com



Vision – 'To serve with high quality education for development of students as competent pharmacy professionals for the upliftment of socio-economic status in rural areas'



Arrange Digital Literacy and skill development session for snehalaya Children



Celebrates nature drive with Snehalaya Children.



Health and Yoga Camp for Snehalyaya